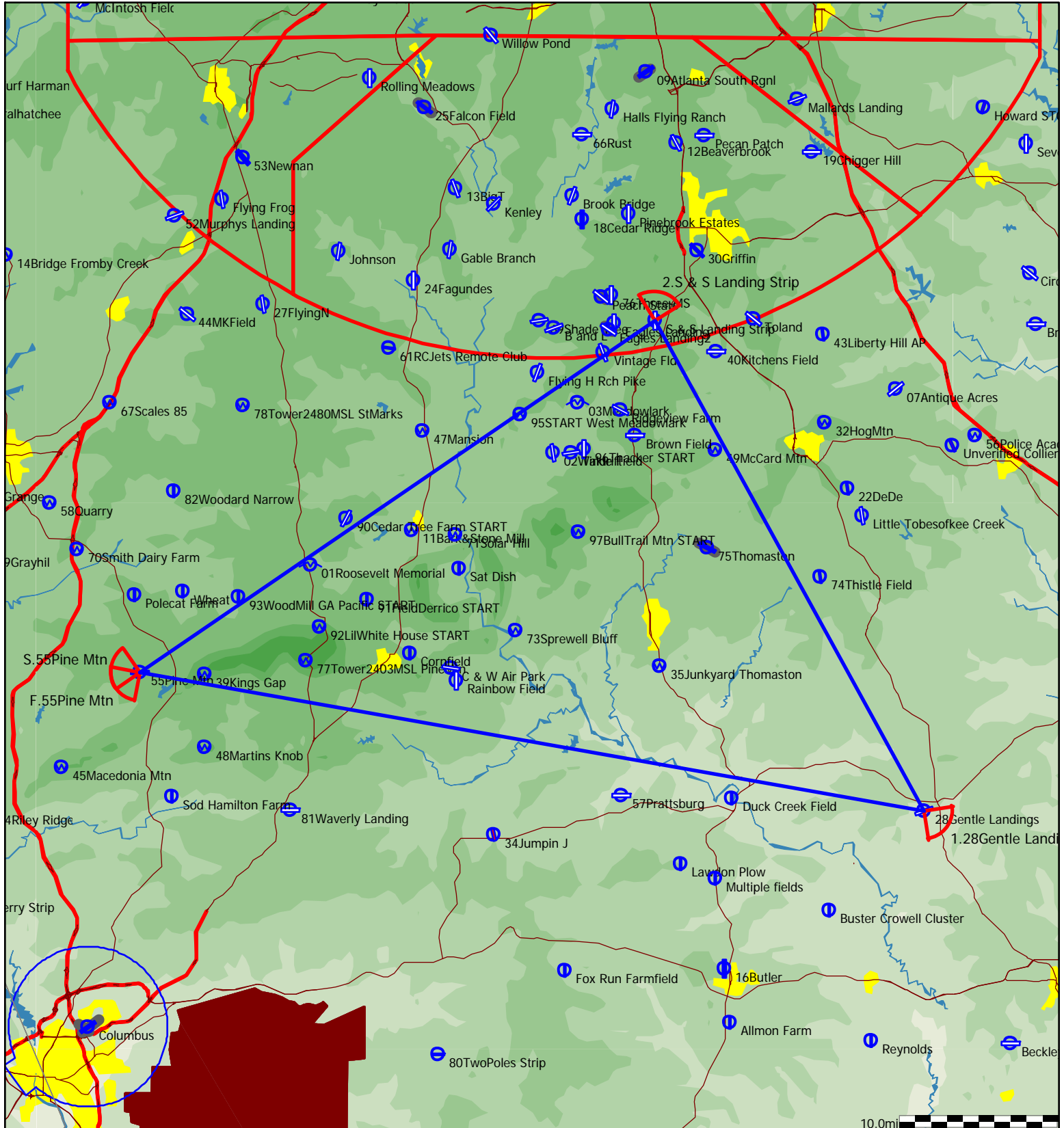


Type: FAI Triangle - (201.6km) [201.6pts]

### Warm Springs 200km Triangles

Task distance: 125.3mi

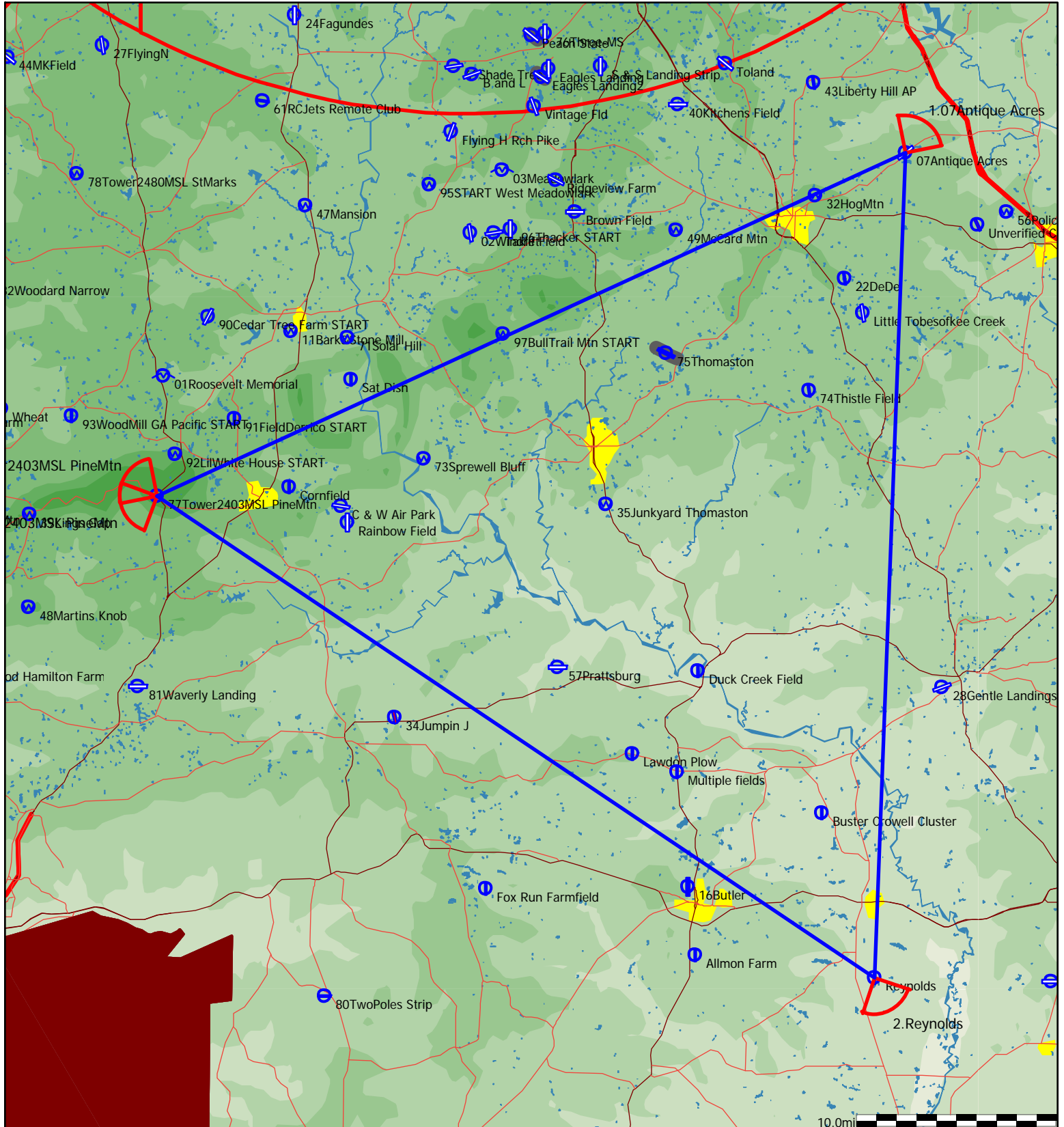
Style	Code	Points	Latitude	Longitude	Dis.	Crs.
Take off	01Rosevl	01Roosevelt Memorial	N32°56'19"	W084°41'47"		
Start	55PineMt	55Pine Mtn	N32°50'27"	W084°52'57"		
1.Point	28GentlL	28Gentle Landings	N32°42'50"	W084°01'39"	50.5mi	100°
2.Point	S&S	S & S Landing Strip	N33°09'44"	W084°19'14"	35.3mi	331°
Finish	55PineMt	55Pine Mtn	N32°50'27"	W084°52'57"	39.4mi	236°
Landing	01Rosevl	01Roosevelt Memorial	N32°56'19"	W084°41'47"		



Type: FAI Triangle - (201.8km) [201.8pts]

Task distance: 125.4mi

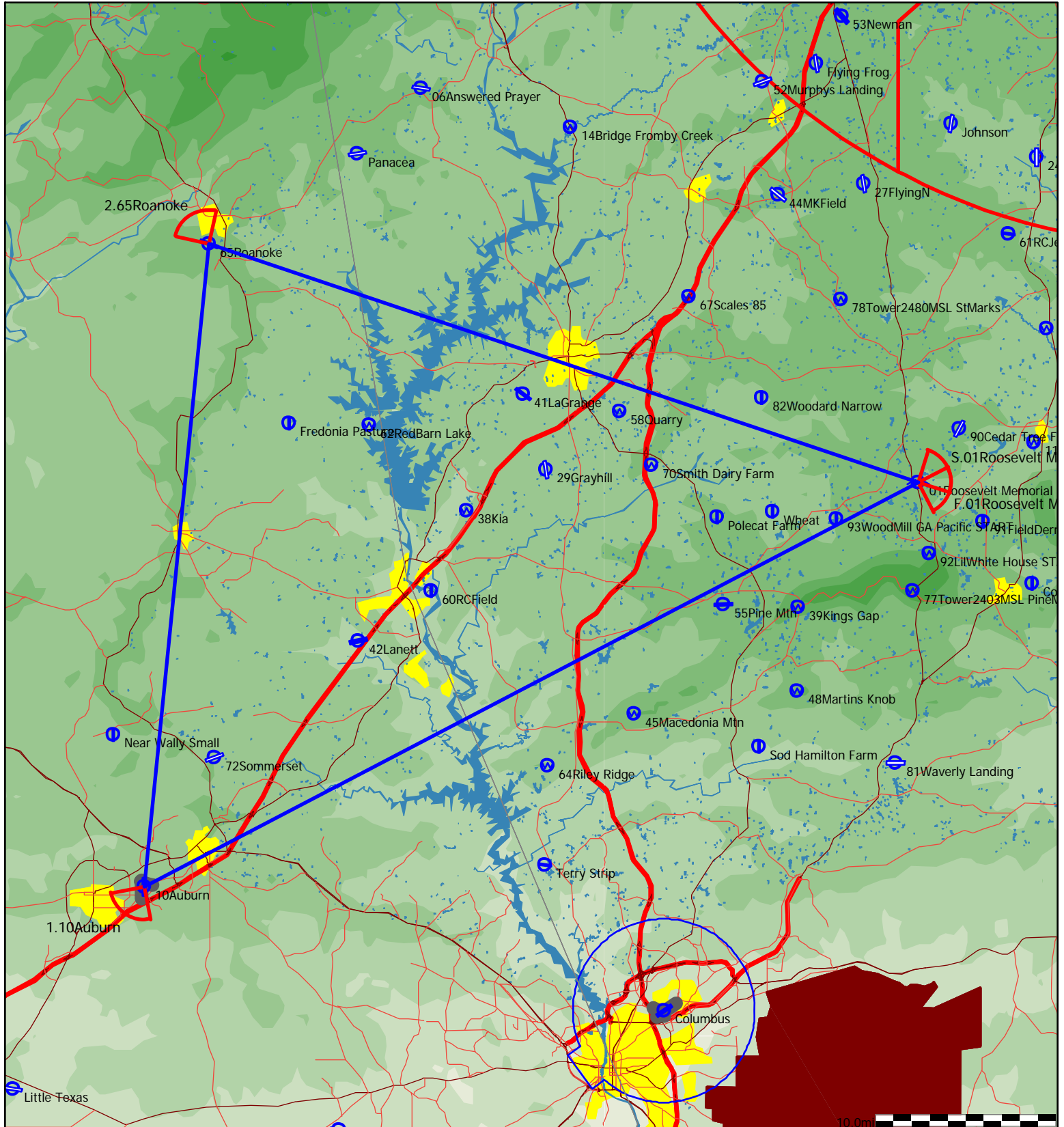
Style	Code	Points	Latitude	Longitude	Dis.	Crs.
Take off	01Rosevl	01Roosevelt Memorial	N32°56'19"	W084°41'47"		
Start	77Tw2403	77Tower2403MSL PineMtn	N32°51'06"	W084°42'06"		
1.Point	07Antiqu	07Antique Acres	N33°06'00"	W084°03'31"	41.1mi	65°
2.Point	REYNOLDS	Reynolds	N32°30'13"	W084°05'07"	41.1mi	182°
Finish	77Tw2403	77Tower2403MSL PineMtn	N32°51'06"	W084°42'06"	43.2mi	304°
Landing	01Rosevl	01Roosevelt Memorial	N32°56'19"	W084°41'47"		



Type: FAI Triangle - (201.8km) [201.8pts]

Task distance: 125.4mi

Style	Code	Points	Latitude	Longitude	Dis.	Crs.
Take off	01Rosevl	01Roosevelt Memorial	N32°56'19"	W084°41'47"		
Start	01Rosevl	01Roosevelt Memorial	N32°56'19"	W084°41'47"		
1.Point	10Auburn	10Auburn	N32°36'54"	W085°26'02"	48.4mi	243°
2.Point	65Roanok	65Roanoke	N33°07'47"	W085°22'20"	35.7mi	6°
Finish	01Rosevl	01Roosevelt Memorial	N32°56'19"	W084°41'47"	41.4mi	108°
Landing	01Rosevl	01Roosevelt Memorial	N32°56'19"	W084°41'47"		



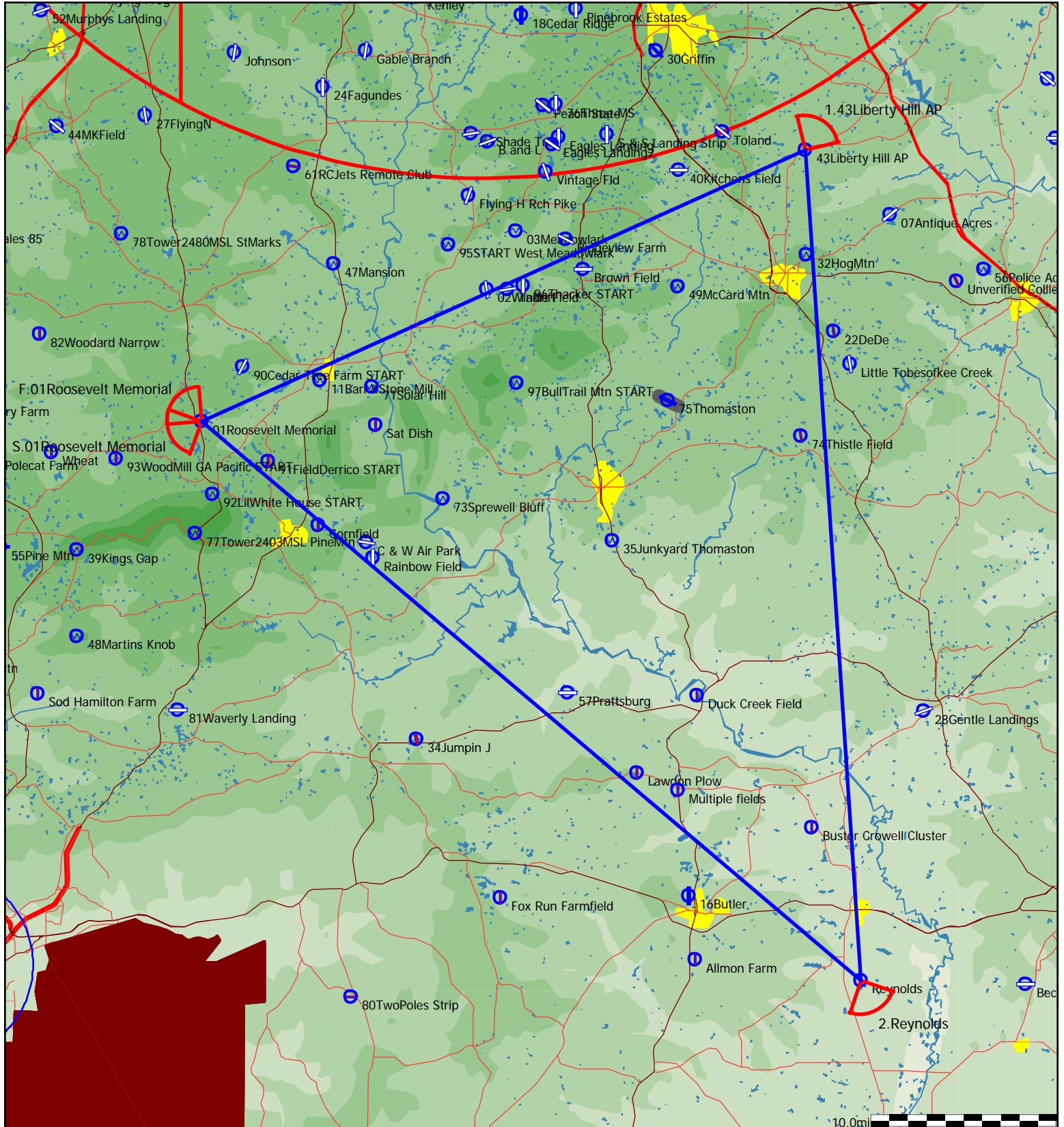




Type: FAI Triangle - (204.0km) [204.Opts]

Task distance: 126.8mi

Style	Code	Points	Latitude	Longitude	Dis.	Crs.
Take off	01Rosevl	01Roosevelt Memorial	N32°56'19"	W084°41'47"		
Start	01Rosevl	01Roosevelt Memorial	N32°56'19"	W084°41'47"		
1.Point	43Librth	43Liberty Hill AP	N33°09'01"	W084°08'15"	35.6mi	66°
2.Point	REYNOLDS	Reynolds	N32°30'13"	W084°05'07"	44.7mi	176°
Finish	01Rosevl	01Roosevelt Memorial	N32°56'19"	W084°41'47"	46.5mi	310°
Landing	01Rosevl	01Roosevelt Memorial	N32°56'19"	W084°41'47"		







Type: FAI Triangle - (213.9km) [213.9pts]

Task distance: 132.9mi

Style	Code	Points	Latitude	Longitude	Dis.	Crs.
Take off	01Rosevl	01Roosevelt Memorial	N32°56'19"	W084°41'47"		
Start	55PineMt	55Pine Mtn	N32°50'27"	W084°52'57"		
1.Point	BSTRCRWL	Buster Crowell Cluster	N32°37'23"	W084°07'51"	46.3mi	109°
2.Point	30Griffin	30Griffin	N33°13'37"	W084°16'30"	42.5mi	349°
Finish	55PineMt	55Pine Mtn	N32°50'27"	W084°52'57"	44.2mi	233°
Landing	01Rosevl	01Roosevelt Memorial	N32°56'19"	W084°41'47"		

